



## **COFFS ORCHID NEWS MARCH 2026 PUBLICATION OF THE COFFS HARBOUR ORCHID SOCIETY**

**7 Kotuku Street, Coffs Harbour. NSW 2450**

**Email: [chorchidsociety@gmail.com](mailto:chorchidsociety@gmail.com)**

**Web: [www.coffSORCHIDSOCIETY.ORG.AU](http://www.coffSORCHIDSOCIETY.ORG.AU)**

### **EDITORIAL**

**It is Show Time!**

The Autumn orchid show season is about to start. Coffs Show kicks off over the ANZAC weekend and the Nambucca Show is in the lead up to Mothers Day. We have a new show on our calendar for the June long weekend when Coffs and Woolgoolga Societies will combine for a Winter Show. The hope here is that we will be able to exhibit some orchids that we don't see benched at the Autumn or Spring Shows. The full show program is yet to be released but it will be a show judged entirely by public popular vote.

So are your plants ready for the show season? What do you need to do so that you bench plants that will be well received by the Judges and the public.

Proper cultural techniques will result in healthy plants that look good on the show bench. Long before you enter your plants into a show, you should make sure they have all the basic needs for a healthy orchid plant: *adequate water and light, ideal humidity, good temperature range, good air movement, well fertilized and free from pests and disease.*

The plant should be staked early. This makes sure the flowers present well to the Judges. You can use clips in the early stages and replace them with ties prior to the show. Multibranching spikes can be tied right up to under the top flower. This especially applies to soft-canines and to many multi-branching Oncidiums.

Make sure the stakes are cut short so they do not cause any eye damage. Remove any hanging hooks, spacers, etc. By removing any travelling ties or stakes before benching you will give the orchid a cleaner and more presentable look. Before the Show make sure you clean up the plant by removing old flower stalks, dead leaves, etc.

Remove any signs of diseases or pests. Don't bring diseased plants to the Show as the Show Marshal will remove them as they may endanger plants of other growers.

Each pot or mount may need support in order to be displayed properly. Use plant stands, larger pots that the benched plant will sit in, elevate the plant using a larger up-turned pot or attach pot feet to the plant pot. If the plant pot is not self-supporting then it may be removed from the show bench.

A clear label is needed for each plant. If the name is not known, then say Unknown or NoID.

Water the plant the day before benching or early in the morning if benching later in the day. The plant needs to survive without water for three days, but it is important to avoid pools of water on the show bench from freshly watered pots. Avoid wetting the flower petals as this may cause spots, etc.

Prior to the Show you will be required to fill out an entry form with details of the orchids you think you will bench. Detailed instructions and the show schedule will be emailed to all members prior to the show. Tables will be provided outside the showroom so you can unpack and label your plants before benching. Place your labelled plants onto the inside receiving table. Do not bench the plants yourself.

**CHOS COMMITTEE 2026**

**PRESIDENT:** PAIGE SINCLAIR 0427 591 901 paigesinclair@me.com  
**VICE PRES:** BOB SOUTHWELL 0417695834 bssouthwell@bigpond.com  
**SECRETARY:** KERRIE GOSLING 0427 515 887 Kerrie506@gmail.com  
**TREASURER:** DAVID RUDGLEY 0401 499 952 davidrudgley64@gmail.com  
**COMMITTEE:** PETER GOUGH 0409 045 645 hacc51@gmail.com  
CHRIS HATTON 0414 942 298 pchatton7@gmail.com  
PAUL HATTON 0426 978 923 pchatton7@gmail.com

**CONTACT DETAILS**

**NEWSLETTER EDITOR:** BOB SOUTHWELL (See Above)

**SPONSORS****COFFS HARBOUR PRODUCE**

Coffs Harbour Produce is at 26 June Street in Coffs. They carry a good range of fertilisers, insecticides and fungicides for orchids, as well as general garden needs.

Phone 02 6652 2599.

**COFFS COAST MAZDA**

For new Mazda vehicles, also second-hand vehicles and ALL your servicing needs. Ring for an appointment 02 6652 3122 or visit 211 Pacific Highway, Coffs Harbour  
You won't be disappointed .

**DARK STAR ORCHIDS**

0416 195832 or (02) 65644088.

Hans and Sue run a small nursery west of Bowraville. They specialise in rare, unusual and hard to find species of many orchids particularly Bulbophyllums, Stanhopeas, Coelogyne and lots of other genera. Check out the website. [www.darkstarorchids.com.au](http://www.darkstarorchids.com.au)

email [darkstarorchids@skymesh.com.au](mailto:darkstarorchids@skymesh.com.au)

**OFFICEWORKS**

Officeworks carries an excellent range covering all stationery needs, computers/monitors/printers, and associated technology. They sell a wide range of smart phones and watches, plus furniture and workspace solutions.

If you are looking for low prices on everyday essentials, it's all there at Home Base, Coffs Harbour. Phone 66 919100 or check out the full range at [officeworks.com.au](http://officeworks.com.au).

**ROSELLA ORCHIDS**

Spring and Autumn Show Sponsor: Located in South Grafton and can supply a wide range of orchids but specialises in Cattleya and Vanda genera. They also stock a large range of hardware and accessories for orchid growers. Nursery is closed to the general public except by appointment.

[www.rosellaorchids.com.au](http://www.rosellaorchids.com.au)

Monthly Sponsor

**CALENDAR, 2026**

5 Mar Australian Native Orchids—Tony Blewitt  
Orchid Grow Comp Draw

2 Apr Bulbophyllums - Rhonda Smith

25-26 Apr CHOS Autumn Show

7 May— Tips and Tricks

4 June— Growing Vandaceous Orchids—Bruce Hall  
Members Plant Sales

2 July— Growing Orchids My Way

6 Aug—Flask Production—Paul Smith

3 Sept—Deflasking Workshop

15 Oct— Plant Auction

5 Nov—AGM/Repotting an Aust. Native—Grahame Beaton

Note: The Committee meets on Tuesday following the Monthly Meeting.

**CHOS BANK DETAILS**

**BSB No: 533-000**

**ACCOUNT No: 32817199**



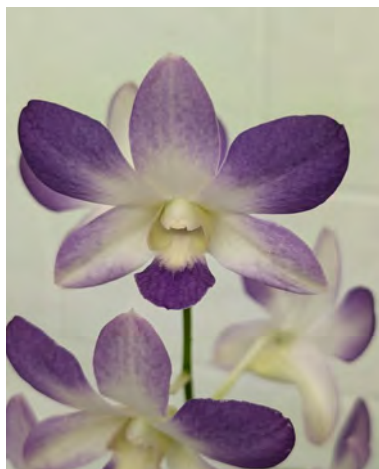
Popular Vote at the  
CHOS February Meeting  
was awarded to  
Peter Gough for this  
magnificent  
*Grammatophyllum  
scriptum* var. *citrinum*  
Congratulations!



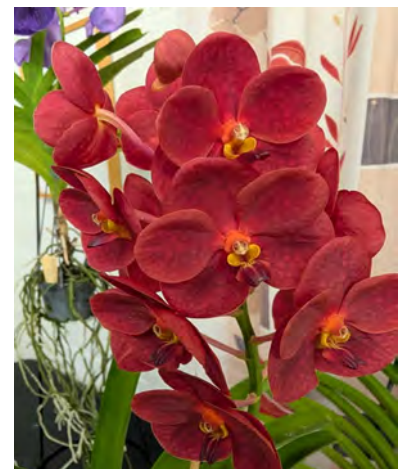
ORCHIDS BENCHED AT THE CHOS FEBRUARY 2026 MEETING



*Dendrobium bigibbum*  
grown and benched by  
Moya Tucker.



*Dendrobium* Aridang  
'Light Blue' Benched by  
Rhonda Smith



*Vanda* Boonyarit Red  
'Thai Ruby' was grown  
by Rhonda Smith



Another Bruce Hall  
special—*Blc. Memoria  
Vida Lee* 'Limelight'  
Sue Flanders  
benched this  
*Catasetum* Orchidglade



*Bulbophyllum grandiflorum* X  
*Bulb. cominsii* was grown and  
benched by Rhonda Smith

Photographs by Gordon Griffiths

**MORE ORCHIDS BENCHED AT THE CHOS FEBRUARY 2026 MEETING**



**Rhonda Smith benched this very nice *Blc.* Hawaiian Wedding Song 'Virgin'**



**Peter Gough benched this classic *Rhynchostylis retusa***



***Blc.* Little Mermaid 'Janet' grown and benched by Bruce Hall**

oooOOOooo

***Miltonia* Goodale Moir "Golden Wonder" was grown by Rhonda Smith**



***Vanda* Roberts Delight 'Blue' was benched by Peter Gough**

**Peter also benched this *Paphiopedilum* Transvaal**



**Photographs by Gordon Griffiths**

## CHOS COMMITTEE MEETING SUMMARY

The following is a summary from the CHOS February Committee Meeting conducted on 10th Feb 2026 at "The Workshop", Jean Street, Coffs Harbour.

- ◆ Meeting commenced at 10.30am.
- ◆ Apologies from David Rudgley and Peter Gough
- ◆ The monthly meeting was held on 5th February with Guests Speaker, Brian Klepzig, from Neutrog Fertilizers. Brian gave a great talk and presented everyone with a free Neutrog sample.
- ◆ Coffs Harbour Surf Club booked for the Awards Presentation on 5th December 2026. Members were in favour of paying \$25 with the balance subsidised by CHOS.
- ◆ Plant Growing Competition for 2026—Plant to be *Phalaenopsis* Splash Gordon and to cost \$15 each (one per member). Orders are now being taken. 40 plants have been obtained from Lyttle Orchid Clones, SA. Plant draw to take place at the March meeting.
- ◆ Prizes for the 2025 Growing Competition to be presented at the March 2026 meeting.
- ◆ BCU long term deposit—\$8,000 to be deposited now and a further \$2,000 after the Autumn Show.
- ◆ CHOS website to be upgraded — quote of \$1,000 accepted.
- ◆ Orders for new CHOS Logo Shirts are now being taken—\$20 per member — remainder subsidised by CHOS.
- ◆ 2026 CHOS Autumn Orchid Show Schedule was tabled and approved. Show will be held over the ANZAC weekend.
- ◆ CHOS/WDOS Combined Winter Show set down for the long weekend in June 2026—committee has been formed (Neville Anderson, Jennifer Lock, Paige Sinclair and Kerrie Gosling) and will meet to determine full details in the near future.
- ◆ CHOS Membership—currently 64 members are financial for 2026. Reminder letters to be sent to those who have yet to renew their membership. Closing date is the March 2026 meeting. After that date non-financial members will be removed from the Membership Register.
- ◆ Monique Tucker was accepted as a new member—welcome Monique!
- ◆ Coffs Harbour Koi Society has asked if CHOS is interested in manning an orchid display and sales table at their show on 21st June at the Botanic Gardens. Are any members interested in helping run this event?
- ◆ Library—to remove older books from the library and give away or dispose of so there is more space available in the storage area.
- ◆ Paul Hatton to look at upgrading the Welcome Pamphlet and the Growing Tips document.
- ◆ Newsletters will no longer be posted to those without an email address. Copies of the newsletter will be available at each monthly meeting.
- ◆ Hessian table covers to be replaced for the Spring Show.
- ◆ Next Committee Meeting will be held at 'The Workshop' on Tuesday 10th March 2026 at 10.30am.

## BITS AND PIECES

- Kiwi Potting Bark is available from Paige Sinclair at \$50 per 50L bag. New supplies have now been received. The climate in Coffs Harbour means you can get away with repotting at most times of the year. Best done in Spring but you can usually get away with it any time except during the depths of winter. Contact Paige to secure your requirements.



- CHOS **Monthly Meeting** will be held on Thursday **5th March** starting at 7.00pm. **Guest Speaker will be Tony Blewitt from Kempsey.** Tony is a qualified orchid judge and a specialist in growing Australian Native Orchids. This will be a very informative talk and a chance for you to understand what you need to do to successfully grow a variety of Australian Native orchids.

The draw for the new Growing Plant Competition (*Phalaenopsis* Splash Gordon) will take place during the meeting. Prizes will also be presented for the winners of the 2025 *Tolumnia* Hybrid Growing Competition.

**Judges for this meeting:** BRUCE HALL and CAROLE DAVIS

It would be greatly appreciated if you would bring a contribution for members supper.

Assistance from members to clean up after the meeting would also be appreciate

- Dates to put on your calendar:

# **24th World Orchid Conference.** 26 to 29 March 2026 at Dresden, Germany.

# **CHOS Autumn Show** - ANZAC weekend—25 –26th April. Set up on Friday 24th April.

# **Nambucca Valley Orchid Society Autumn Show** — 7th to 9th May 2026

# **CHOS/WDOS Combined Winter Show**—Kings Birthday weekend— 6th to 7th June 2026

# **Mingara Orchid Fair and Show**—27th to 28th June 2026

- 2025-2026 Membership fees for the CHOS are due on the 1st November 2025 and should be paid within three months of that date. Fees have been set at \$15 per member and \$20 per couple plus \$5 for each additional family member. Junior members (under 18 years old) are \$5 per person.
- The Growing Competition plant for 2026 will be a *Phalaenopsis* Hybrid (*Phalaenopsis* Splash Gordon) . Orders are now being taken from members and the cost will be \$15 each. Plants will be allocated at the March Meeting. Place your orders and payment at the February meeting or direct deposit \$15 in the CHOS Bank Account with Growing Comp as the reference (see page 2 of this newsletter for banking details). Numbers are limited so get in early. To many members, growing a *Phalaenopsis* appears to be too big a challenge and a number of members have decided it may prove difficult, especially as they seem to grow best in an indoor environment. The challenge should be taken up by all members as Moth Orchids are rewarding orchids and are easy to grow in an indoor area.



***Phalaenopsis*  
Splash Gordon**



**FEATURE ARTICLE:**

**Paph. Saint Swithin 'Dora's Delight' - Part Two**

**By Jim Brydie** (Recently benched at a KOS monthly meeting)

(Part 1 was produced in the February CHOS newsletter)

This new species *Paph. anitum* has been discovered from the stream, south of Sungao, Mindanao Island, Philippines. The 'type' specimen was discovered about 800 m from the sea level. This species is very similar to *Paph. adductum*, don't you think so? The people around the mountains know this species as **Black Orchids**. In truth, this species distributes from 220 m to 1000m elevation. And the plants are not so rare ...

Data definitions	Anitum	Adductum
Location & elevation	Eastern Mindanao, 220~1000m	Northern Mindanao, 1250~1350m
Habitat/humidity	80~100%,very shady	75~80%,medium bright
Blooming	April to Sept	whole year
Plant height, leaf color	30~75cm, deep blue green, darker tessellations	10~30cm green with tessellation
leaf length, leaf width	up to 75cm, 4~10cm	30cm, 3~6cm
Inflorescence	75~150cm,2~7 flowers	25~40cm,2~4 flowers
flower color	yellow green or yellow orange striped with black or black mahogany	yellow cream with reddish maroon
<b>Dosal sepal</b>	<b>3/4th black over yellow green base</b>	<b>cream striped with maroon</b>



**adductum**



**adductum Jo**



**anitum Black Hook**



**adductum (Zepmeusel)**



**anitum in situ**

When you see more and more picture of various adductum and anitum I can see the separation of adductum from philippinense but within the range of variation I can also see strong similarities in the range of philippinense.

***Paph glanduliferum*** (including syn *gardineri*, *praestans* and *striatum*)

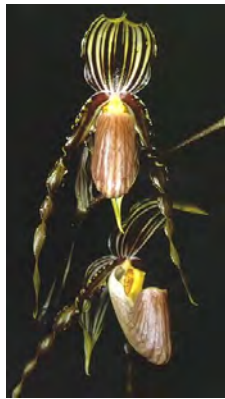


This is where the philippinense family strays away from being endemic to the Philippine islands. *Paph glanduliferum* and its 'bits' are all found in the western part of Irian Jaya, the very left side of the island we call Papua New Guinea. The tiny red dots show recorded locations. Travaldos prestigious blog tells us: "*Paphiopedilum glanduliferum* is endemic to northwestern New Guinea and the surrounding islands of Misool, Salawati, Jobi (also known as Yapan) and the northeast coast of Waigeo. It grows on calcareous outcrops in well drained areas from sea level to 1700 meters."

It doesn't get as far as Borneo but the gene pool for philippinense and cousins is clearly getting pretty close to the territory of *rothschildianum*. I wonder if they might have shared some extinct forebear?

*Glanduliferum/praestans/striatum* grow as a terrestrial and rarely as an epiphyte but as it always grows in

association with limestone outcrops, I assume that 'terrestrial' implies at least quasi lithophytic. Like philippinense it has broad, stiff, fleshy leaves to make a plant up to 50 cm wide, the inflorescence is also up to 50cm and carries up to 5 large flowers. Very similar in overall dimensions to philippinense but more commonly with more horizontal petals.



**praestans/glanduliferum**

**praestans/glanduliferum (ditto)**

**straia/glanduliferum**

*Paph wilhelminiae* (named after the queen Queen Wilhelmina of the Netherlands)



**Paph wilhelminiae 'Sue'**



**(pic by Marak)**



**'Ibn's Magic Touch'**



**pic by Quahphanit**

**ORIGIN/HABITAT:** *New Guinea. This terrestrial orchid is distributed in a narrow east-west band at 5600-5900 ft. (1700-1800 m) through the highlands of central New Guinea from near the Wissel Lakes region in western New Guinea (Irian Jaya) eastward to Southern Highlands Province in Papua New Guinea. Plants are found on grassy slopes that have been long deforested, growing in heavy clay-like soil over limestone, and on limestone rubble in full sunlight. They grow in the open in bright light among grasses or near rhododendrons.*

Still considered synonymous with glanduliferum by some, but in addition to differences in the flower around the staminode, its growing habitat is quite different, and its distribution territories are widely separated. I have no personal experience of either, but from what I have read, I believe it is yet another variation within this group. What a lovely orchid this one looks like. I have never seen one in the flesh, but it looks something like a missing link between rothschildiaum and philippinense. Its growth habitat and style of growing seems to be quite unique with the habitat is described as "Terrestrial in montane grassland on limestone, also on almost pure limestone rubble; 1200 to 1800 m. Travalδος further tells us that it grows in grassy slopes in heavy, clay like soil over limestone and rubble.

The Orchids of New Guinea website has some excellent habitat pictures, but they are not easily copied so I have none to show you. It had shots showing plants growing among grass and bracken ferns with no overarching trees or shrubs so it is hard to imagine what the day-to-day conditions would be like.

So after your introduction to the philippinense family. How confident do you feel about identifying one from the other without a taxonomist's handbook? An interesting group, isn't it?

**Jim Brydie**

**Housework for Men:** One evening, Sue arrived home from work to find the children bathed, one load of clothes in the washer and another in the dryer, dinner on the stove, and the table set. She was astonished -- something's up.

It turns out that Bob had read an article that said wives who worked full-time and had to do their own housework were too tired for romantic involvements and that the man should do more.

The night went well and the next day, she told her friends at work all about it. "We had a great dinner. Bob even cleaned up. He helped the kids do their homework, folded all the laundry and put everything away. I really enjoyed the evening."

"But what about afterward?" asked her friends. "Oh, that was perfect too. Bob was too tired and went to bed early ..."

**ALWAYS CHECK OUT THE ORCHID OFFERINGS AT BUNNINGS:**

On a recent trip to Bunnings I was surprised and pleased to see a large tray of orchid seedlings on offer and at a reasonable price. Rather than the usual *Cattleyas* and *Dendrobiums* they had a number of other genera including three or four different *Phalaenopsis*. All were large and healthy seedlings. I purchased one of the *Phalaenopsis* and was even further surprised to see that it had been deflasked into a Coir Plug and the root system was healthy and had grown through the plug and ready to be potted-on into a larger pot. Well worth a look next time you visit Bunnings. Editor



Doctor says I have  
to cut out drinking.



**MY FRIEND WENT BALD  
YEARS AGO BUT STILL  
CARRIES AROUND AN  
OLD COMB WITH HIM**

UnKNOWN PUNster @2019

**HE JUST CAN'T PART  
WITH IT**

**I ASKED MY FRIEND  
TO SPELL WONTON  
BACKWARDS**

UnKNOWN PUNster @2018

**HE SAID NOT NOW**

**ORCHID CULTURAL CALENDAR FOR FEB-MAR FOR COFFS HARBOUR**

<b>ORCHID GROUP</b>	<b>WATER REQUIREMENTS</b>	<b>FERTILIZER REQUIREMENTS</b>	<b>DISEASE AND PEST CONTROL</b>	<b>OTHER COMMENTS</b>
<b>AUSTRALIAN NATIVES</b>	Extra shading may be needed during hot weather. Keep moist. Water every second day. Evening mist on hot days. Avoid water in axils of new growths.	Fertilize weekly using low Nitrogen fertilizer at half strength.	Monitor pests and diseases. Regular spraying may be required. Especially check for Dendrobium Beetles and Boisduval Scale.	Seedlings may need more frequent waterings.
<b>BULBOPHYLLUMS</b>	Water every two to three days. Keep evenly moist	Fertilize every two weeks using low nitrogen fertilizer	Spray with a fungicide such as Mancozeb every four weeks	Watch out for snail attacks. Keep plants well watered when extreme heat expected
<b>CATASETUMS</b>	Water at least once a day. Twice on very hot days	These plants are heavy feeders so fertilize every watering. Or add slow release Plantacote Top K 8M to each pot	Watch for mites and scale. Bug Killa will control scale insects. Mites will need to be regularly treated with a spray	Good air flow is desirable
<b>CYMBIDIUMS</b>	Water every second day. Keep pots evenly moist	Fertilize with low nitrogen fertilizer every week	Watch out for mites, snails and slugs	Keep an eye out for flower spikes. Stake as needed. Keep in cool area to initiate spikes
<b>HARD CANES</b>	Water every two days during Feb then reduce to 1-2 times per week. (depending on rainfall—keep plants moist)	Fertilize every five (5) days using low Nitrogen fertilizer at half strength. As spikes appear reduce fertilizing to once every 7—10 days	Monitor pests and diseases. Regular spraying may be required. Especially check for Dendrobium Beetles and Boisduval Scale.	New growths should be progressing well. Stake flower spikes as required
<b>ONCIDIUM ALLIANCE</b>	Water at least once per week depending on rainfall and temperature. Let mix almost dry out before next watering	Fertilize weekly using low Nitrogen fertilizer at half strength.	Check for pests and diseases. Spray monthly with Mancozeb fungicide.	Top up using slow release High K/8 Months.
<b>PAPHIOPEDILUMS</b>	Water twice weekly	Fertilize weekly using low Nitrogen fertilizer at half strength. Use slow release High K/8 M	Check for pests and diseases. Spray monthly with Mancozeb fungicide.	Seedlings may need more frequent waterings.
<b>PHALAENOPSIS</b>	Water once or twice weekly as required	Fertilize weekly using low Nitrogen fertilizer at half strength.	Make regular checks for pests and disease. Spray as required	Repot those plants with spent flowers. Add slow release High K/8 Months.
<b>VANDACEOUS</b>	Water every second day	Weekly with high PK fert. @ ½ strength.	Check for chewing insects and other pests. Check for fungus and rots and treat as required.	Maintain high humidity and provide good air circulation.